

Safety Net Medical Home Initiative March 8, 2011



**National AHEC
Organization**

Connecting students to careers,
professionals to communities,
and communities to better health.

1

AREA HEALTH EDUCATION CENTERS

SUCCESSFULLY RECRUITING,
TRAINING AND RETAINING A
DIVERSE HEALTH CARE WORKFORCE
THROUGHOUT THE UNITED STATES

AHEC Legislation

2

- Created in 1972 (periodic reauthorizations)
- Authorizing Legislation: Section 751 of the Public Health Service Act Title VII, reauthorized in 2010 health care reform
- Funding: via Federal cooperative agreements and matching State and local funds
- Recipients: Schools of Medicine/ Osteopathic Medicine; Parent Institutions; Incorporated Consortia; Nursing Schools

Area Health Education Centers

3

AHEC Mission Statement

The mission of the AHEC program is to enhance access to quality health care, particularly primary and preventive care, by improving the supply and distribution of health care professionals through community/academic educational partnerships.

US Public Health Service Act

AHEC by the Numbers

4

- 56 AHEC Programs (54 Medical Schools; 2 Nursing Schools)
- 235 AHEC Centers
- 49 States (Kansas) and the District of Columbia, Guam, Palau, Yap, American Samoa, Guam, Commonwealth of the Northern Mariana Islands, Republic of the Marshall Islands

Distribution of AHEC Programs & Centers

5



The AHEC Pipeline

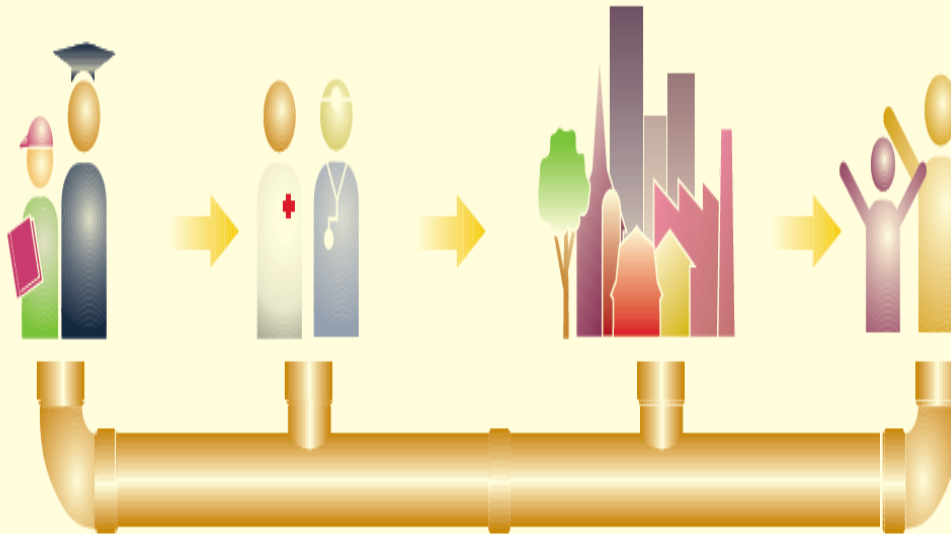
6

A National Pipeline For Community-Based Health Professions Education

The impact of AHECs is reflected in their performance. Data below is for the 2009 program year.

CONNECTING STUDENTS TO CAREERS

- ▶ Over 456,000 students introduced to health career opportunities
- ▶ Over 32,000 students participated in AHEC health programs of 20+ hours, providing them with health career exposure, professional mentorship, and academic enhancement to prepare them for health professions training programs



CONNECTING COMMUNITIES TO BETTER HEALTH

- ▶ Over 438,000 health professionals received training through AHEC continuing education programs
- ▶ Almost half of the continuing education program participants were physicians (27%) or nurses (20%)
- ▶ Awarded 1.17 million contact hours of continuing education programs

CONNECTING PROFESSIONALS TO COMMUNITIES

- ▶ Over 47,000 health professions students received training at 17,388 community-based sites
- ▶ Over 10,600 of the community-based training sites were located in underserved areas, including over 3,976 in designated Health Professions Shortage Areas (HPSAs) and almost 2,000 at Community Health Centers
- ▶ Over 60% of the health professions students were physicians (43%) or nurses (20%)

Sources: FY 2009 HRSA Bureau of Health Professions Report Tables and NAO Committee on Research and Evaluation (CORE) Critical Data Tables from Reporting AHEC Programs.

SNMHI Initiative and AHEC

7

- **AHEC states with PCMH Activities:**
 - Massachusetts: MA AHEC Program; UMASS Med School
 - Pennsylvania: PA AHEC Program; Penn State University
 - Colorado: Colorado AHEC Program; UC-Boulder Med School
 - Idaho: Idaho AHEC Program; WWAMI AHEC Program
 - Oregon: Oregon AHEC Program: OHSU
 - North Carolina: NC AHEC; UNC Chapel Hill School of Medicine
 - Oklahoma: Oklahoma State University; OK School of Medicine
 - California: California AHEC Program; UC School of Medicine-Fresno Medical Education Program